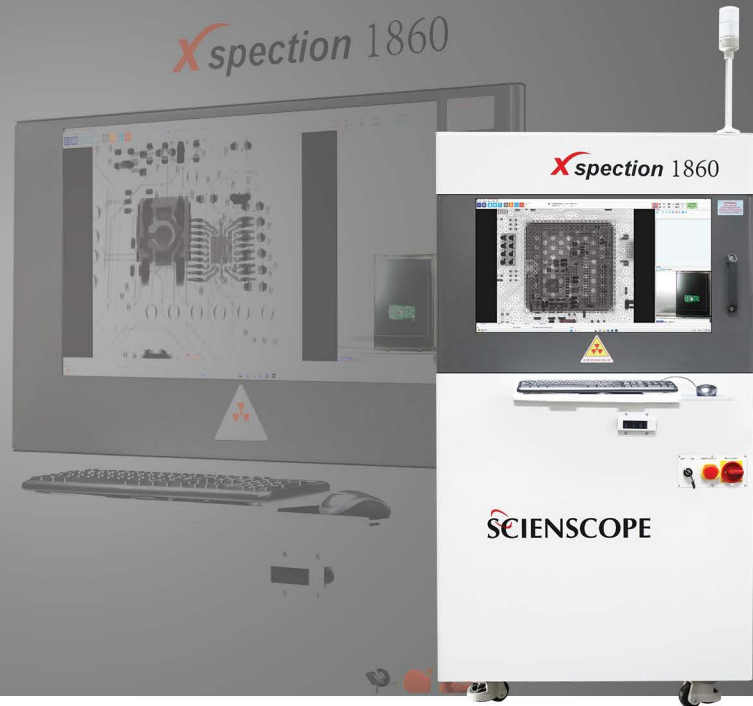


Xspection 1860

X-Ray Inspection



The Xspection 1860 is a versatile X-ray inspection machine designed to deliver comprehensive defect detection and quality assurance for the global SMT industry. Equipped with a single closed tube and 45-degree tilting capabilities, it provides high-resolution imaging ideal for detailed batch inspections. With integrated statistical analysis, it tracks, analyzes, and addresses process gaps to enhance production quality and reliability. It is an indispensable tool for inspecting Multilayer PCBs, detecting Voids, analyzing Semiconductors, verifying Barrel Fill (TH), and examining Li Batteries. The Xspection 1860 significantly boosts first-pass yield by minimizing defects, resulting in higher productivity and cost savings. Elevate your quality assurance with the precision, efficiency, and reliability of the Xspection 1860!

Fully Shielded Inspection Chamber for Safe, Precision Imaging

The carbon fiber board stage provides a sturdy platform for sample placement, allowing precise positioning along the Y axis for forward and backward movement. The stainless steel table and T-axis tilt control enable dynamic angle adjustments, giving a detailed view from multiple perspectives. With the Z1 axis motor, the flat-panel detector seamlessly rises and falls, zooming in for enhanced close-ups or out for a broader view,



FEATURES

- Fully integrated 90kV microfocus sealed tube
- Spot size down to 5µm
- Navigation camera for easy click & inspect
- 45° Tilting angle capability
- Accurate void calculation
- Enhanced BGA Tool: Reduces false alarms with an advanced Ball Grid Array (BGA) inspection tool, ensuring more accurate results
- Industrial PC: Microsoft Windows 11

XSPECTION 1860

Xspection 1860

Hardware	Detection Range	440mm x 400mm / 17in x 15in
	Maximum Tilt	45°
	Inspection Speed	Stepper Motors
	Max X-Ray Power	90kV, Minimum 5µm
	Flat Panel Detector	5" x 5" 16bit
	Resolution	1536px x 1536px
	Pixel Size	125µm
	Optical Inspection Camera	Megapixel
Software	CNC Programmable	Yes
	Fiducial	Yes
	Void Percentage Calc. (auto)	Yes
	BGA Measuring	Yes
	Barcode	Optional (Laser Scanner)
	Windows 11 Ready	Yes
	Dimension	950mm x 1240mm x 2170mm (with light) 37.4in x 48.8in x 85.4in (with light)
	Weight	1100kg / 2425lbs
	Electric	AC 110-240V VAC 50-60Hz

