

AXI-6100

X-Ray Inspection



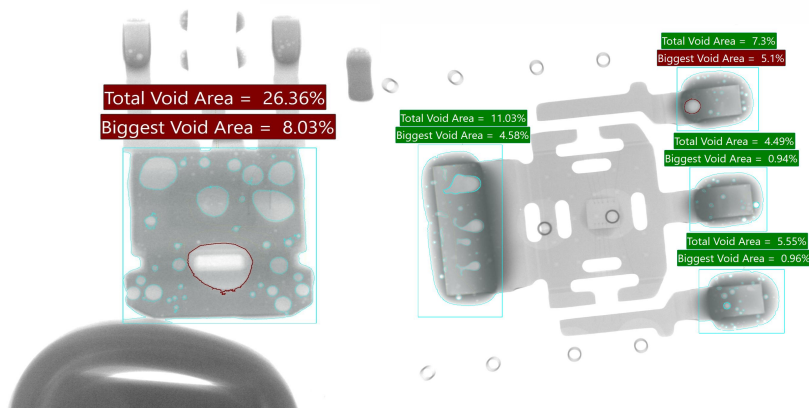
The Scienscope AXI-6100 series comprises specialized X-ray inspection systems explicitly engineered for the examination of long circuit boards such as those used in LED and Electric Vehicle (EV) battery controller boards. The AXI-6000 series is available in three distinct dimensions: 1.2 meters, 1.8 meters, and 2 meters. Despite the differences in physical size, all models possess identical inspection functionalities.

A distinctive feature of the AXI-6100 series is its inline design, integrating a conveyor system for seamless handling of extended boards. The operational tempo for these inspection systems is notably efficient, averaging approximately one second per inspection point.

The systems are optimally designed to detect and analyze voids in LED and automotive Printed Circuit Boards (PCBs). They are capable of performing either intermittent or exhaustive, 100% inspections, thereby catering to a broad spectrum of quality assurance requirements.



Defects Detection



FEATURES

- Fully integrated, 90kV or 130kV high power micro-focus closed x-ray tube
- Automatic programming of fiducial & barcode inspection
- Tilting capabilities of 40°
- Three different conveyor dimensions available
- Accurate void percentage calculated with AI
- Industrial PC: Microsoft Windows 11

AXI-6100

X-Ray Inspection

AXI 6100 (1.2m)



AXI 6100 L (1.8m)

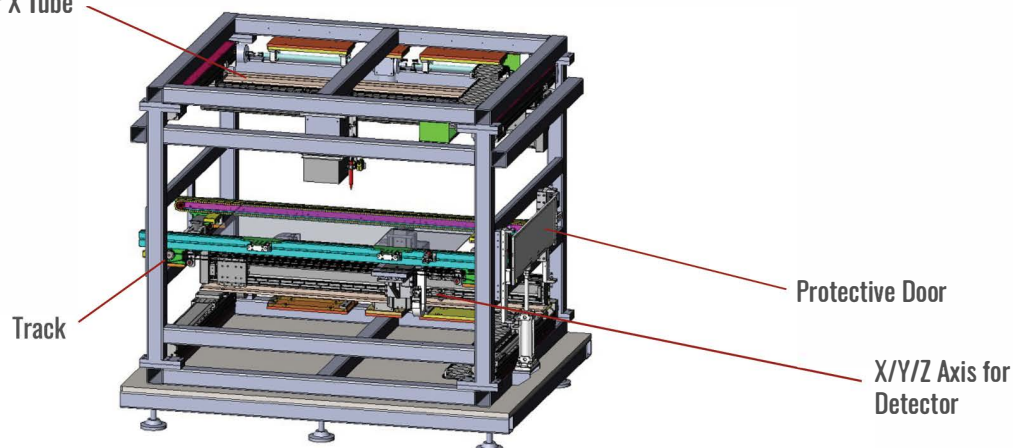


AXI 6100 XL (2.0m)



	AXI 6100 (1.2m)	AXI 6100 L (1.8m)	AXI 6100 XL (2.0m)	
Hardware	Maximum Length	1200mm/48in	1800mm/71in	2000mm/ 79in
	Maximum Width	600mm/23.6in	600mm/23.6in	600mm/ 23.6in
	Inspection Speed	1S/ field of view	1S/ field of view	1S/ field of view
	Maximum X-Ray Power	90kV/130kV	90kV/130kV	90kV/ 130kV
	X-Ray Flat Panel Detector	5"x5"	5"x6"	5"x6"
	Tall Board Configuration	Optional	Optional	Optional
	SMEMA Ready	Yes	Yes	Yes
	Maximum Tilt	40°	40°	40°
	CNC Programmable	Yes	Yes	Yes
	Fiducial	Yes	Yes	Yes
Software	Void Percentage calc. (auto)	Yes	Yes	Yes
	Barcode	Optional	Optional	Optional
	Offline Programming	Optional	Optional	Optional
	Repair Station	Optional	Optional	Optional
	Discrepancy Comparator	Optional	Optional	Optional
	Windows 11 Ready	Yes	Yes	Yes
Dimensions (L/W/H)	2280mm x 2016mm x	2780mm x 2016mm x	3080mm x 2016mm x	
Weight	2110mm 2800kg	2110mm 3300kg	2110mm 3600kg	
Electric	3kW	3kW	3kW	

X/Y/Z Axis for X Tube



Track

Protective Door

X/Y/Z Axis for Detector